



HOLY TRINITY CHURCH 55 Kilbride Road, Dunoon, PA23 7LN

FEASIBILITY STUDY

ARCHITECO
SUSTAINABLE DESIGN & LOW ENERGY BUILDING SPECIALISTS

INTRODUCTION

The Holy Trinity Church is an historic and important site in a unique and beautiful location in Dunoon. Currently serving a congregation of a hundred people, the brief is to improve existing facilities, expand to allow Sunday School and perhaps camping, add extra parking, add an expanded graveyard, and make use of the wild area to the Southwest of the site.

IDEAS & IMPRESSIONS

Wilderness behind (Bishop's Glen, Corlarach) should be considered – wildlife garden, transition between nature and a more ordered site. Consider planting, trees, habitat, feeding stations etc.

Ecclesiastical site – cloisters, contemplation, bible garden, healing garden, sensory garden. Box, arches, squares. Labyrinth would work well in this context. Information on the history/heritage.

Sensory/healing garden – using planting with biblical/scriptural resonance, herbs for healing, etc.

Pilgrimage pod – a beacon to bring people to the church from afar. Simple 'bothy' type of building.

Campsite – space, facilities – sinks/taps, pits for cooking. Bike washing hose.

Multifunction green, for marquees, fetes, events, overflow parking, etc

A more 'lively' part of the site (camping, kids playground, multipurpose green), should be balanced with more peaceful parts – church, graveyard, contemplative formal garden. Divisions between, and space between different parts should be respected. Sunlight, shadow, seasonal differences including road access in winter, etc – road circulation and parking should be flexible.

WISHLIST

Church hall – multifunction hall for Sunday School, events, etc.

Car parking

Facilities – toilets, kitchen, etc.

Graveyard expansion

Labyrinth

Children's play park

Water feature

Future development potential retained

CONSERVE & CONSIDER

The beautiful views to the sea in the East shouldn't be obstructed

The historic buildings and existing graveyard. History and heritage of the site.

Manse as a private residence, joined to the site but at a remove.

Peacefulness, spaciousness

Access road can be difficult in winter and is steep for those who are mobility impaired.

Maintenance of the site/garden

Aesthetics of the hall, any new development, in context of surrounding natural beauty and wilderness

S I T E

Aerial view Holy Trinity Church site



Holy Trinity Church situation surrounded by the graveyard & mature trees



Interior Holy Trinity Church

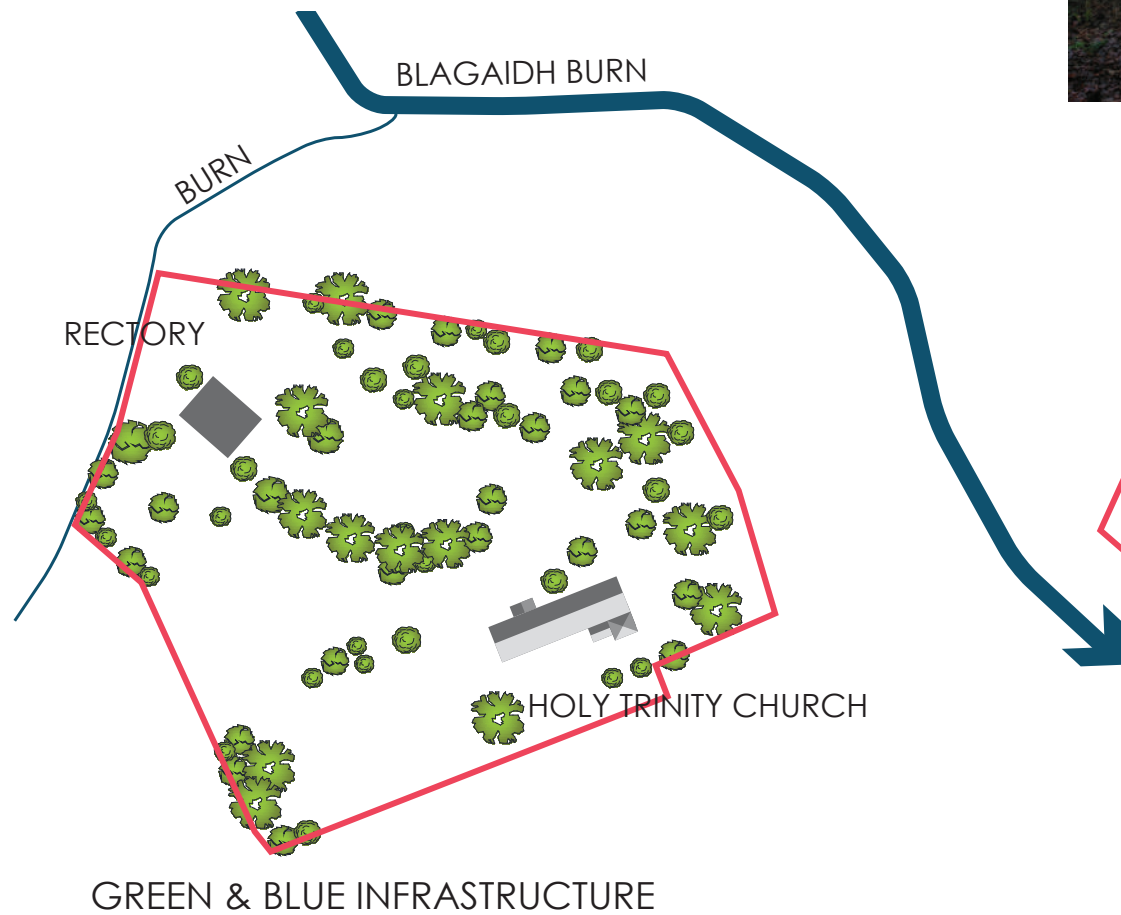


Site character Graveyard & Mature Trees

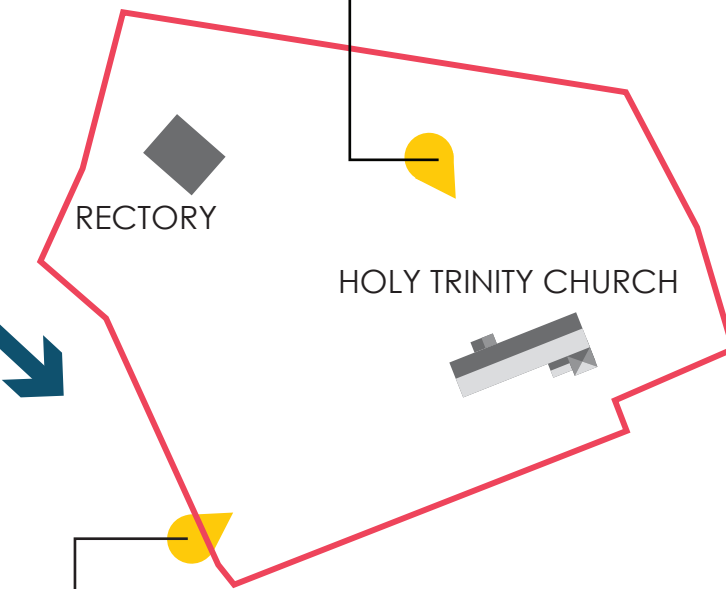


mapping contents (c) crown copyrights and database rights 2018 ordnance survey 100057510





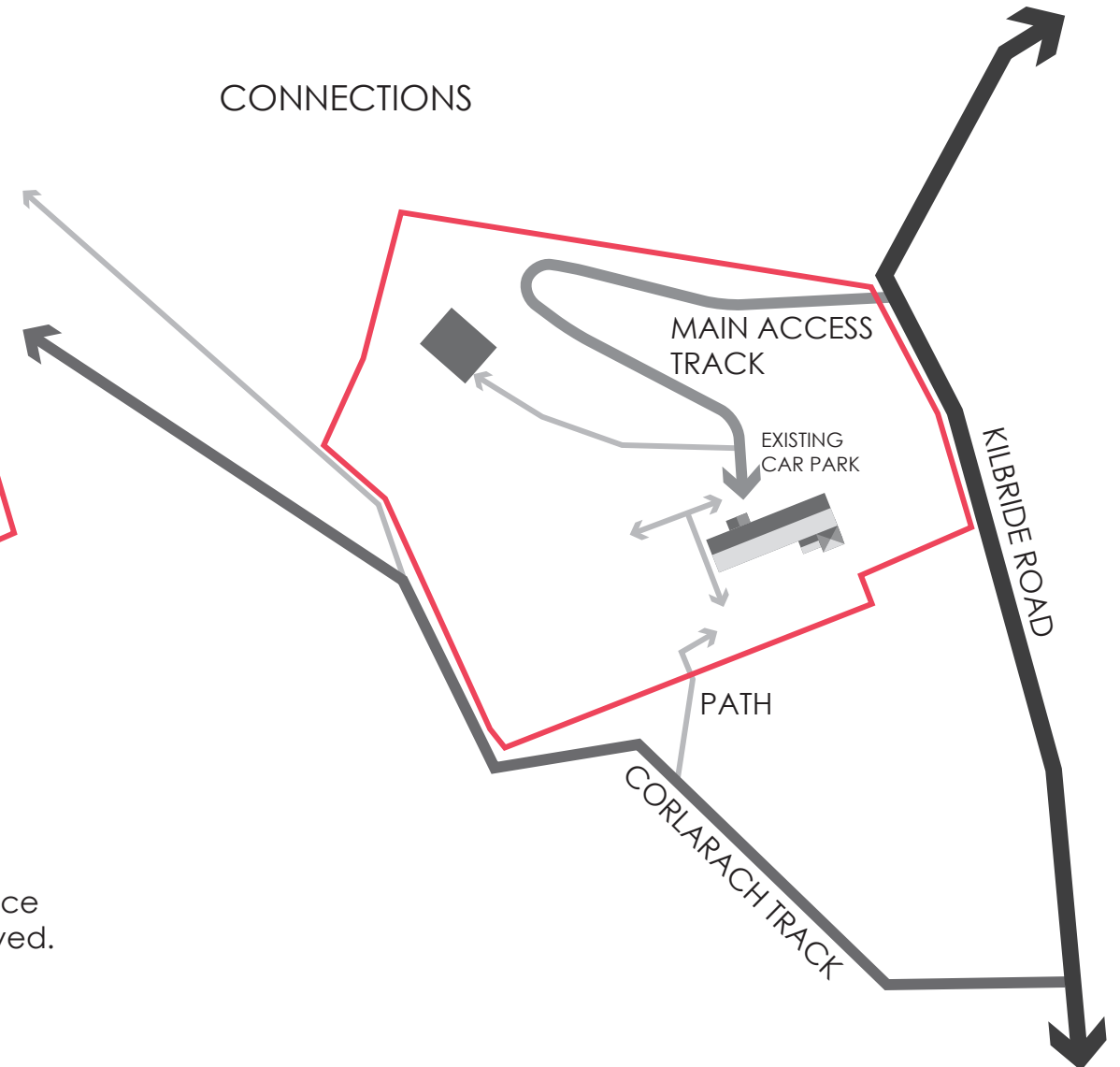
The site benefit from a beautiful, peaceful and relaxing setting in part because of a large cluster of mature trees, bushes and shrubs around the only two buildings on the site : the Holy Trinity Church and the rectory.
The green infrastructure should aim to be preserved as much as possible to ensure the character of the place is preserved.



IMPORTANT VISTAS
Two main location offer a great outlook to enjoy the built structure and natural elements of the Holy Trinity at the entrance of the site. These vistas should be preserved.



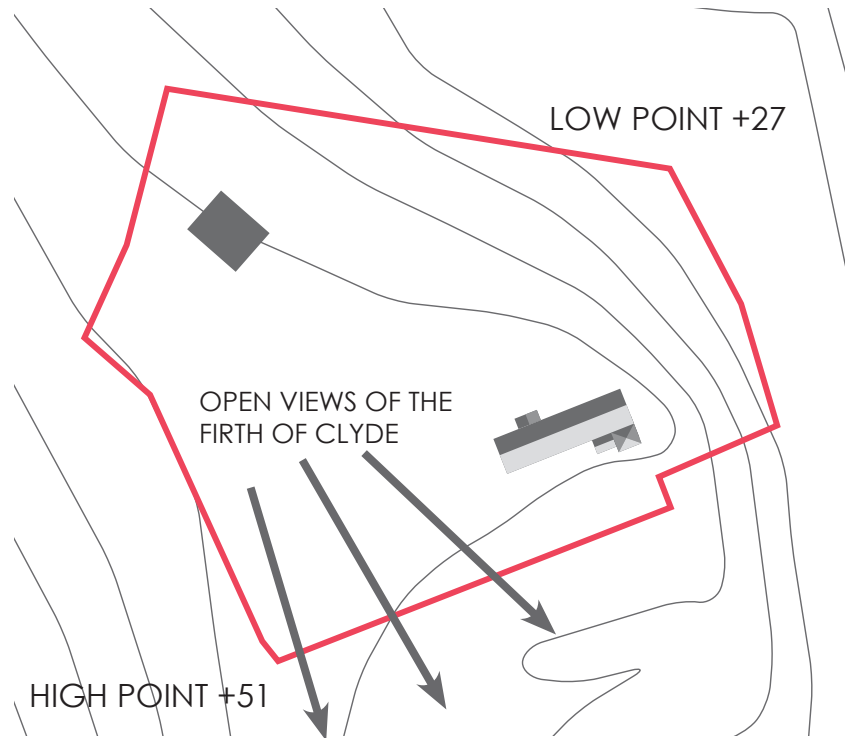
CONNECTIONS



The main access to the site is from Kilbride road to the east. A track climbs the steep hillside up to the church and ends in a small car park.

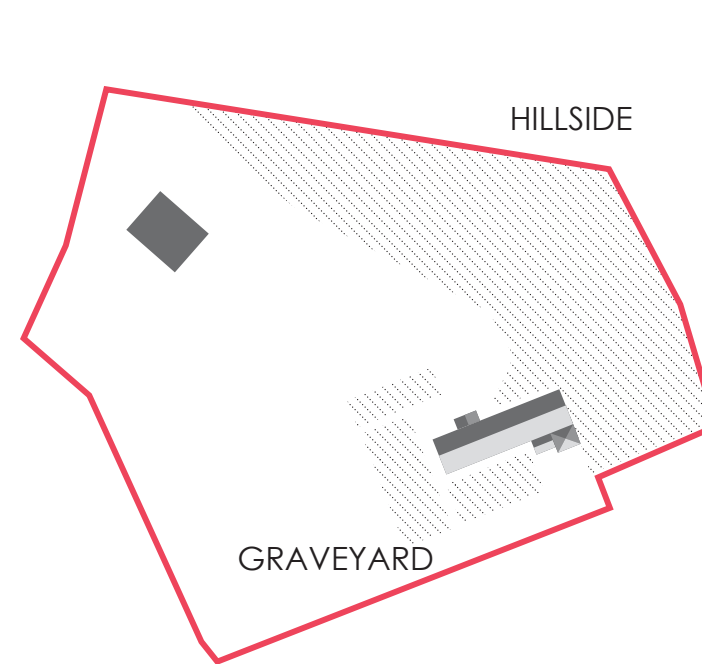
Corlarach track runs to the south south west of the site to serve Bishop Glen Forestry commission car park and the builders yard to the south of the church. Several paths allows for pedestrian connections to the church and the surrounding natural areas.

TOPOGRAPHY CONTOUR 5M



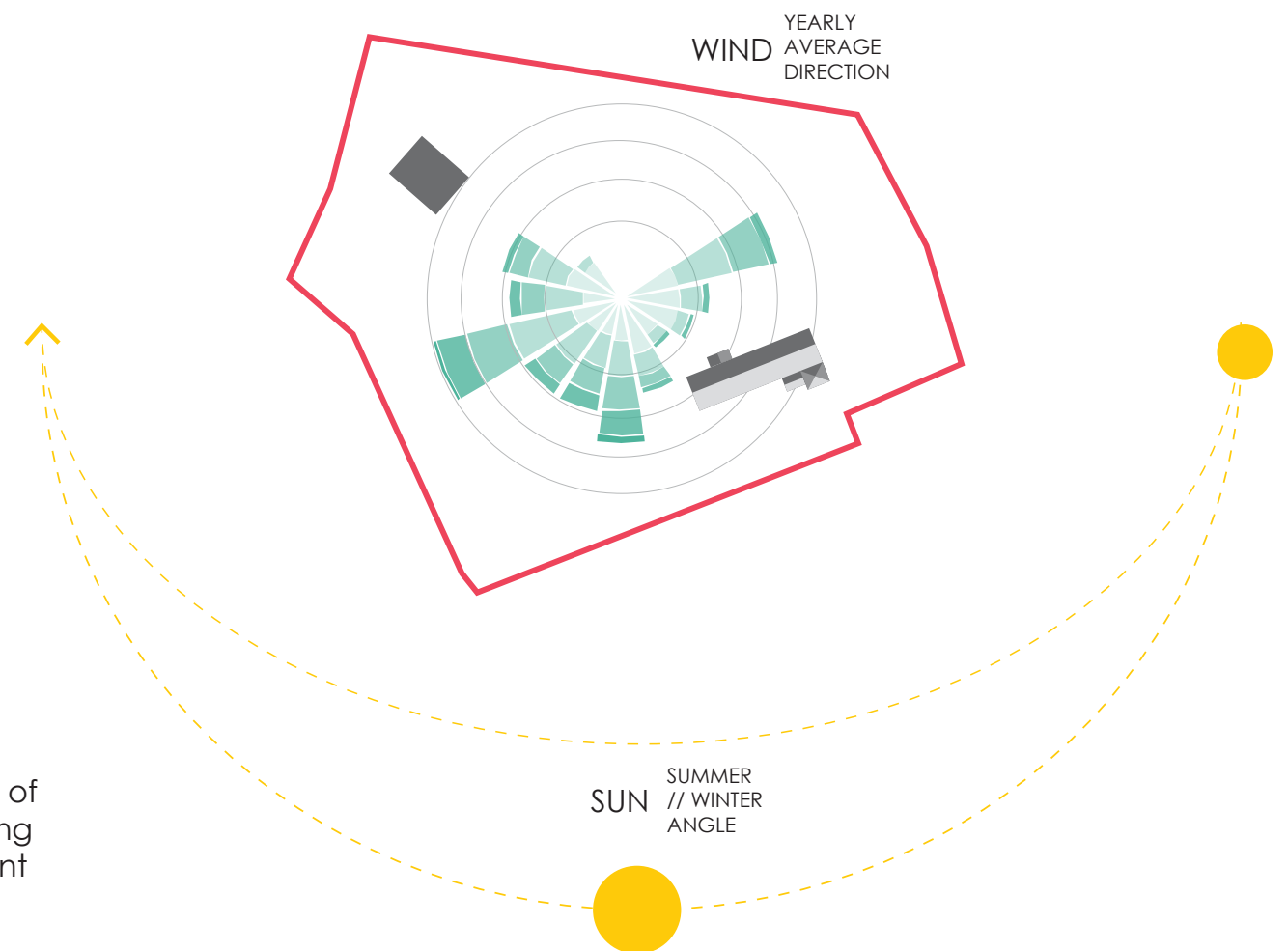
The site is located on Kilbride Hill and has a prominent position which offers views over the Firth of Clyde, West Bay and Dunoon. These corridors of views should be enhanced and preserved.

UNDEVELOPABLE LAND



The accentuated topography renders some part of the site undevelopable. The graveyard surrounding the church also prohibits any form of development near the church.

MICROCLIMATE



Being on the top of a hill, the site is open to the wind. The prevalent wind on a yearly average blows from east to west and also some times from the south.

The sun and the views are coordinating to offer a great microclimate position with the views being towards the south and the optimal position of the sun too. The facade of the hall should take advantage of this great location.



NOTE

Copyright ARCHITECO 2018

Do not scale construction dimension to be verified prior to construction

PROJECT

Holy Trinity Church
55 Kilbride Road
Dunoon

DRAWING NAME

As Existing

DRAWING STATUS

In Progress

DRAWING SCALE

1:1000 @ A3

DRAWING NUMBER

1394-01

ARCHITECO

SUSTAINABLE DESIGN & LOW ENERGY BUILDING SPECIALISTS

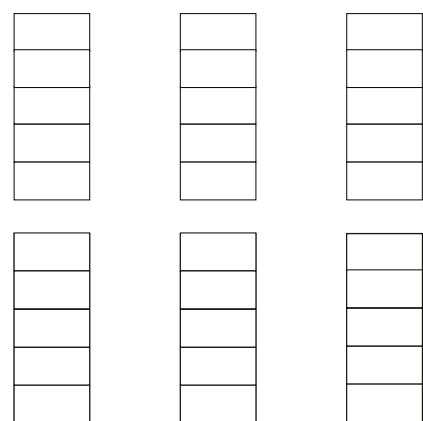
43 Argyll Street, Dunoon PA23 7HG
info@architeco.co.uk 01369 701 988 www.architeco.co.uk

1 : 1 000 41 02 0 50 100 metres

STRATEGY

NEW ELEMENTS REQUIRED :

CAR PARKING
30 SPACES (2.5 X 5 M)



6 M

HALL
6 X 20 M



TOILETS
6 X 2 M



CORLARACH TRACK

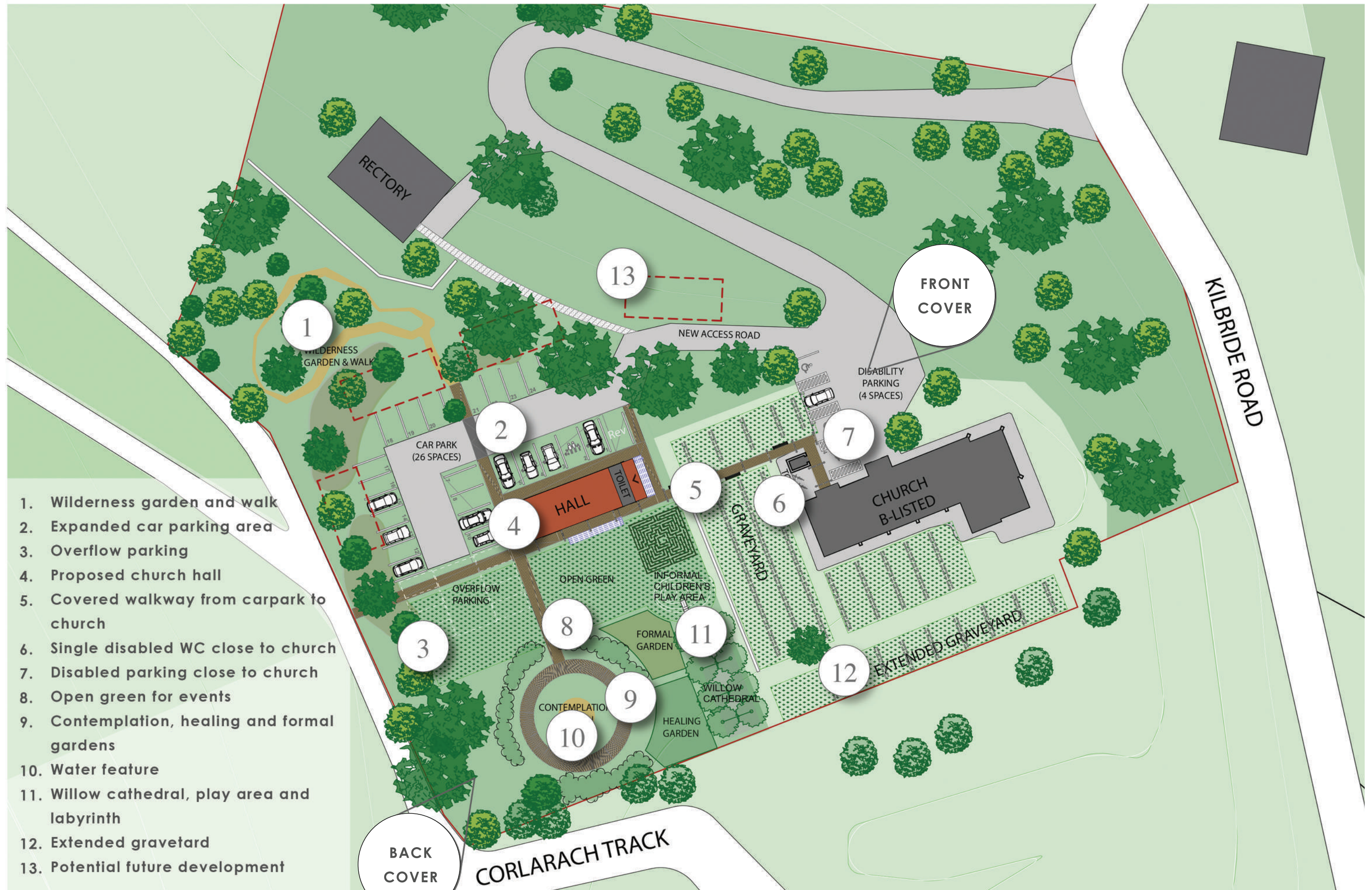
1 : 500  POTENTIAL ACCESS POINTS

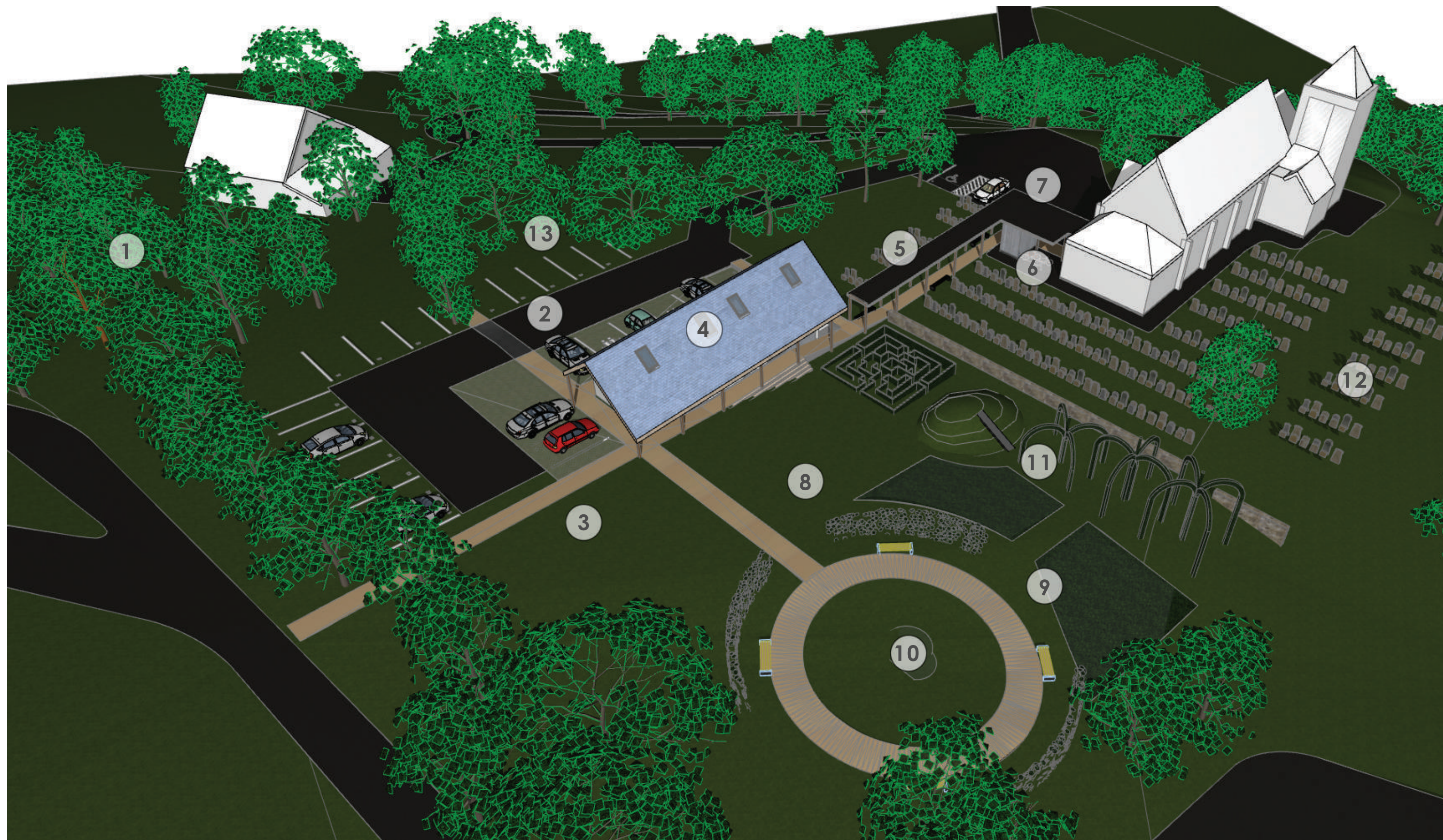
KILBRIDE ROAD

Potential new access points to the site include using the existing track and linking a new track to access the new land or diverting a track from the Corlarach track.

The following pages present various options to organise the hall, toilet and parking on the new land by using the three access points describe here.

The dimensions above are to 1:500 and only indicative at this stage. It is assumed this dimensions would be appropriate to the use which has been discussed. The following layout only offers tangible options to discuss an optimal organisation which later can be altered regarding dimensions of the hall and the parking depending on the need.





1. Wilderness garden and walk

2. Expanded car parking area

3. Overflow parking

4. Proposed church hall

5. Covered walkway from car-park to church

6. Single disabled WC close to church

7. Disabled parking close to church

8. Open green for events

9. Contemplation, healing and formal gardens

10. Water feature

11. Willow cathedral, play area and labyrinth

12. Extended graveyard

13. Potential future development



- 2. Expanded car parking area
- 3. Overflow parking
- 4. Proposed church hall
- 5. Covered walkway from car-park to church
- 6. Single disabled WC close to church
- 8. Open green for events
- 9. Contemplation, healing and formal gardens
- 10. Water feature
- 11. Willow cathedral, play area and labyrinth
- 12. Extended graveyard

FEEDBACK FORM:

		VERY DESIRABLE	DESIRABLE	DON'T MIND	UNDESIRABLE	MORE INFO NEEDED
Wilderness garden and walk	1					
Expanded car parking area	2					
Overflow parking	3					
Proposed church hall	4					
Covered walkway from car-park to church	5					
Single disabled WC close to church	6					
Disabled parking close to church	7					
Open green for events	8					
Contemplation, healing and formal gardens	9					
Water feature	10					
Willow cathedral, play area and labyrinth	11					
Extended graveyard	12					
Potential future development	13					

ADDITIONAL COMMENTS & SUGGESTIONS:
